

SELF-PROGRAMMING AUTOMATION FOR SLIDING GATES



CARDIN TRADE SERIES SL ACE

Electromechanical gear motors suitable for gate positioning control and safety system management. Ideal for residential sliding gates the unit moves gates up to 16 metres per minute with speed regulation.

Powerful, rapid and controlled by state of the art electronics, the unit is fitted with a powerful direct current motor backed up by a finely tuned double gear kinematic system which reduces the stress on the motor and structure caused by the movement of gates.

The reduction unit stator is made of die cast aluminium and contains a never ending screw and double reduction lubricated with grease.

Installation, on a robust and rust proof base, is possible on any structure and the unit may be fitted both to the right as well as to the left of the passageway.

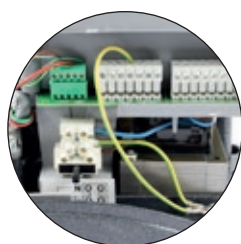
The use of direct current motors increases the performance, guarantees high efficiency, long life and silent running.

The integrated programmer allows encoder-controlled gate positioning and self-programming thus reducing installation times to a minimum and optimising the programming procedure.

Repositioning takes place automatically whenever foreign objects get in the way of the gate as it is moving. The electronic control unit is completed by the anti-crush and "soft start" and "soft stop" functions.

Open collector:

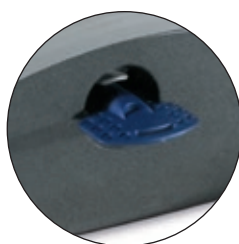
The product range is factory set for the insertion of an open collector receiver card that guarantees compatibility with all the radio control series available in the Cardin catalogue.



ELECTRONIC PROGRAMMER WITH
EXTRACTABLE TERMINAL BLOCKS



OPEN COLLECTOR
RECEIVER CARD



MANUAL RELEASE SL ACE FAST

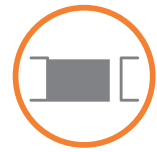


RAPID ANCHORING
SYSTEM



MANUAL RELEASE SL ACE 601

CARDIN TRADE SERIES SL



PRODUCT DESCRIPTION

ORDER NUMBER

ELECTROMECHANICAL UNIT WITH A 24V MOTOR

The automation is made up of self-locking gear motor controlled by encoder and magnetic travel limits with an in-built:

- electronic programmer;
- motor speed regulation;
- motor drive power regulation;
- slot-in open collector receiver card.

The programmer allows you to rapidly set the system parameters including: the sequential button mode, automatic reclosing, warning lamp pre-flashing, flashing warning lamp activation, indicator light and photoelectric cell function setting etc.

Ideal for residential sliding gates up to 300kg.

The appliance is fitted with a safe and secure key-operated manual release system protected by a plastic access door.



ELECTROMECHANICAL UNIT WITH A 24V MOTOR

The automation is made up of self-locking gear motor controlled by encoder and magnetic travel limits with an in-built:

- electronic programmer;
- motor speed regulation;
- motor drive power regulation;
- double 8,2kΩ inputs for connecting safety edges;
- slot-in open collector receiver card.

The programmer allows you to rapidly set the system parameters including: the sequential button mode, automatic reclosing, warning lamp pre-flashing, flashing warning lamp activation, indicator light and photoelectric cell function setting etc.

Compatible with the Prg-Link system that allows the monitoring and programming of the system parameters from a remote position.

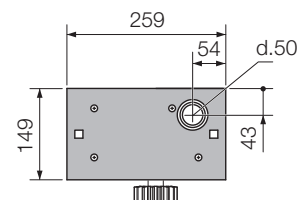
Possibility of connecting two gear motors in Master and Slave configuration for installations with opposing sliding gates.

Ideal for residential sliding gates up to 600kg.

The appliance is fitted with a safe and secure key-operated manual release system protected by a plastic access door.

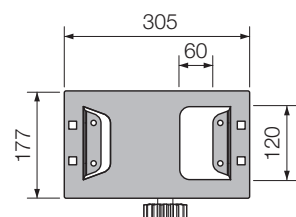


SL ACE FAST



FASTENING BASE
SPARE PARTS NUMBER PIAFACE300AS

SL ACE 601



FASTENING BASE
SPARE PARTS NUMBER RPIAIFEVOZ